

**General Permit NCG560000**  
**National Pollution Discharge Elimination System**  
**Pesticide Discharge Management Plan**  
**1221 Thorpe Rd, PO Box 1180**  
**City of Rocky Mount**  
**North Carolina**  
**February 2012**

## **City of Rocky Mount, North Carolina Pesticide Discharge Management Plan**

City of Rocky Mount's PDMP includes the following elements:

### **5.1.1 Pesticide Discharge Management Team**

### **5.1.2 Pest Management Area Description**

#### **5.1.3.1 Schedules and Procedures**

- a. Spill Prevention Procedures
- b. Pesticide Application Equipment Procedures
- c. Pest Surveillance Procedures

#### **5.1.3.2 Pertaining to Other Actions Necessary to Minimize Discharges**

- a. Spill Response Procedures
- b. Adverse Incident Response Procedures
- c. Pesticide Monitoring Schedules and Procedures

### **5.1.5 Signature Requirements.**

### **5.2 Pesticide Discharge Plan Modifications**

### **5.3 Pesticide Discharge Management Plan Availability**

### **7.0 Recordkeeping and Reporting**

### 5.1.1 Pesticide Discharge Management Team

Distribution of the City of Rocky Mount's PDMP Team responsibilities.

A. The Person(s) responsible for managing pests in relation to the pest management area include the following positions within the City of Rocky Mount:

The City Mayor,

The City Manager,

The Public Works Director/Department Head,

The Community Code Enforcement Supervisor,

The six (6) Community Code Enforcement Inspector Positions,

One Vector Control Worker Position,

and two (2) Part-time mosquito control positions.

B. Person(s) responsible for developing and revising the PDMP within the Community Code Enforcement Division include the Public Works Director/Department Head, the Community Code Enforcement Supervisor, and the Community Code Inspector assigned to coordinate mosquito control activities for the Community Code Enforcement Division.

C. Person(s) responsible for developing, revising, and implementing corrective actions and other effluent limitation requirements within the Community Code Enforcement Division include the Public Works Director/Department Head, the Community Code Enforcement Supervisor, and the Community Code Inspector assigned to coordinate mosquito control activities for the Community Code Enforcement Division.

D. Person(s) responsible for pesticide applications within the Community Code Enforcement Division include the following positions: The Community Code Enforcement Supervisor, the six (6) Community Code Enforcement Inspector Positions, one (1) Vector Control Worker Position, and two (2) Part-time mosquito control positions. The Part-time positions are subject to work from April to November, but most commonly start in either the month of May or June and work until the end of October. In the event of an environmental disaster, FEMA response, and additional Public Works Department employees may be tasked with adulticiding responsibilities.

**The City of Rocky Mount Pesticide Discharge Management Plan (PDMP) Team.**

This section identifies all the persons (by name and contact information) that compose the “Team” as well as each person’s individual responsibilities (which may be described by their title):

The City Mayor:

**David W. Combs**

City of Rocky Mount

301 S. Franklin St., PO Box 1180, Rocky Mount, NC 27802-1180

*Phone: 252-937-2121 or 252-443-5053*

*Email: davidcombsmayor@aol.com*

The City Manager:

**Charles Penny**

City of Rocky Mount

301 S. Franklin St., PO Box 1180, Rocky Mount, NC 27802-1180

*Phone: 252-972-1331*

*Email: [Charles.Penny@rockymountnc.gov](mailto:Charles.Penny@rockymountnc.gov)*

The Public Works Director/Department Head:

**Jonathan Boone**

City of Rocky Mount

301 S. Franklin St., PO Box 1180, Rocky Mount, NC 27802-1180

*Phone: 252-972-1299*

*Email: [Jonathan.Boone@rockymountnc.gov](mailto:Jonathan.Boone@rockymountnc.gov)*

The Community Code Enforcement Supervisor:

**Brenton Bent - NCDA Category B license is pending**

City of Rocky Mount

1221 Thorpe Rd, PO Box 1180, Rocky Mount, NC 27802-1180

*Phone: 252-467-4955*

*Email: [Brenton.Bent@rockymountnc.gov](mailto:Brenton.Bent@rockymountnc.gov)*

Community Code Enforcement Senior Inspector

**Brian Bottoms - NCDA Category B license #5220**

City of Rocky Mount

1221 Thorpe Rd, PO Box 1180, Rocky Mount, NC 27802-1180

*Phone: 252-467-4963*

*Email: [Brian.Bottoms@rockymountnc.gov](mailto:Brian.Bottoms@rockymountnc.gov)*

Community Code Enforcement Inspector (& Mosquito Control Coordinator):

**Robert F. Collins**

City of Rocky Mount - **NCDA Category B license #1877**

1221 Thorpe Rd, PO Box 1180, Rocky Mount, NC 27802-1180

*Phone: 252-467-4957*

*Email: [Robert.Collins@rockymountnc.gov](mailto:Robert.Collins@rockymountnc.gov)*

**The City of Rocky Mount PDMP Team (cont):**

Community Code Enforcement Inspector (**position is open**):

**(Pending)- NCDA Category B license # (pending)**

City of Rocky Mount

1221 Thorpe Rd, PO Box 1180, Rocky Mount, NC 27802-1180

*Phone: 252-467-4954*

*Email: [Wayne.Stitt@rockymountnc.gov](mailto:Wayne.Stitt@rockymountnc.gov)*

Community Code Enforcement Inspector,

**Luis Ramirez - NCDA Category B license #6328**

City of Rocky Mount

1221 Thorpe Rd, PO Box 1180, Rocky Mount, NC 27802-1180

*Phone: 252-467-4970*

*Email: [Luis.Ramirez@rockymountnc.gov](mailto:Luis.Ramirez@rockymountnc.gov)*

Community Code Enforcement Inspector,

**Dwight Alan Pridgen - NCDA Category B license #6658**

City of Rocky Mount

1221 Thorpe Rd, PO Box 1180, Rocky Mount, NC 27802-1180

*Phone: 252-467-4971*

*Email: [Alan.Pridgen@rockymountnc.gov](mailto:Alan.Pridgen@rockymountnc.gov)*

Community Code Enforcement Inspector,

**David Neal Watson - NCDA Category B license #6711**

City of Rocky Mount

1221 Thorpe Rd, PO Box 1180, Rocky Mount, NC 27802-1180

*Phone: 252-467-4962*

*Email: [David.Watson@rockymountnc.gov](mailto:David.Watson@rockymountnc.gov)*

Vector Control Worker,

**Jeffrey A. Wells - NCDA Category B license #6657**

City of Rocky Mount

1221 Thorpe Rd, PO Box 1180, Rocky Mount, NC 27802-1180

*Phone: 252-467-4972*

*Email: [Jeff.Wells@rockymountnc.gov](mailto:Jeff.Wells@rockymountnc.gov)*

**The City of Rocky Mount PDMP Team (cont):**

Part-time Summer Vector Control Worker,

**John Faulkner - NCDA Category B license #6657**

City of Rocky Mount

1221 Thorpe Rd, PO Box 1180, Rocky Mount, NC 27802-1180

*Phone: 252-467-4952*

*Email: NONE*

Part-time Summer Vector Control Worker,

**Open Position (Name will not be known until position is filled)**

City of Rocky Mount

1221 Thorpe Rd, PO Box 1180, Rocky Mount, NC 27802-1180

*Phone: 252-467-4952*

*Email: NONE*

FINAL DRAFT

## 5.1.2 Pest Management Area Description

**5.1.2.A. Target Pests:** The pests of concern for the City of Rocky Mount are (but are not limited to) the thirty-two (32) species shown in bold type of the thirty-eight (38) mosquito species on the list below. These species either have the ability to transmit virus\*\* or occur in such numbers to constitute a nuisance and/or hindrance to the general public. The list below also contains an additional six (6) species which have been found in the Rocky Mount area. Those six (6) species have not been shown to pose any significant health risk or occur in such low numbers that they do not pose a problem for the general public. They or any of the other species found statewide may be included later if they are shown to transmit virus or occur in such numbers that they could pose a public health risk to the general public.

The list below consists of species collected in Rocky Mount by one or more methods since the Rocky Mount mosquito control program began (circa 1965). Those methods include catching and identifying adult mosquitoes from CDC light traps, New Jersey light traps or by collecting adult mosquitoes during Landing Counts. Mosquito larvae have also been collected “by dipping” and identified to supplement the list below.

### MOSQUITO SPECIES OF ROCKY MOUNT, NC

No.	Genus and species****	Special Notes	Possible disease vector status-**
01	<b>Aedes aegypti</b>	Piedmont and coastal, rare***	DEN, YF, WN
02	<b>Aedes albopictus</b>	Statewide, containers and tree holes. Worst pest mosquito in the state.	DEN, EEE, JC, LAC, WN
03	<b>Aedes cinereus</b>	Uncommon	CV, WN
04	<b>Aedes vexans</b>	Very common, statewide	CV, EEE, LAC, TVT, WN
05	<b>Anopheles crucians complex</b>	Crucians + 4 new undescribed species, very common. Crucians Complex = total of 7 species	EEE, LAC, TEN, TVT, WN
06	<b>Anopheles punctipennis</b>	Statewide, one of the most common species in the state.	CV, EEE, LAC, TEN, WN, Malaria
07	<b>Anopheles quadrimaculatus</b>	Locally common, one of 3 species in Quadrimaculatus complex in NC.	Malaria, CV, EEE, TEN, JC, WN
08	<b>Coquillettidia perturbans</b>	Locally common, larvae attach to cattails and sedges. Major emergence in May-June.	CV, EEE, TEN, TVT, WN
09	<b>Culex erraticus</b>	Common near reservoirs and in retention ponds.	EEE, WN

City of Rocky Mount PDMP 2012

10	<b>Culex pipiens complex</b>	All of state, except Brunswick County	CV, EEE, LAC, SLE, WN
11	<b>Culex restuans</b>	Common	CV, EEE, LAC, SLE, WN
12	<b>Culex salinarius</b>	Statewide, very common.	EEE, TEN, WN
13	Culex territans	Common, feeds on frogs	WN
14	<b>Culiseta Inornata</b>	Winter species, late fall to early spring	CV, WN
15	<b>Culiseta Melanura</b>	Maintains EEE in birds – coastal/piedmont species.	EEE, WN
16	<b>Ochlerotatus atlanticus</b>	Very common in coastal plains.	EEE, LAC, WN
17	<b>Ochlerotatus canadensis</b>	Very common in spring, occasional hatches after hurricanes in late summer/fall.	CV, EEE, JC, LAC, WN
18	Ochlerotatus dupreei	Piedmont and coastal (rare in mountains)	
19	<b>Ochlerotatus fulvus pallens</b>	Piedmont and coastal.	
20	Ochlerotatus grossbecki	Rare, Northeast part of state.	
21	<b>Ochlerotatus infirmatus</b>	Locally common, in coastal plains and piedmont.	EEE, TVT
22	<b>Ochlerotatus japonicus</b>	In 2008 documented in 49 counties. Container/tree hole/rock pool species.	WN, LAC (?)
23	<b>Ochlerotatus mitchellae</b>	Uncommon	EEE
24	<b>Ochlerotatus sollicitans</b>	Abundant in brackish water.	CV
25	<b>Ochlerotatus sticticus</b>	Spring/Early summer, piedmont/mountain species.	EEE
26	<b>Ochlerotatus taeniorhynchus</b>	Abundant in brackish water.	CV, TVT, WN
27	<b>Ochlerotatus tormentor</b>	Locally common.	LAC
28	<b>Ochlerotatus triseriatus</b>	Tree holes and containers	CV, EEE, LAC, WN
29	Orthopodomyia alba	Uncommon, upper canopy, feeds on birds	
30	<b>Orthopodomyia signifera</b>	Feeds on birds, larvae in tree holes and containers	WN
31	<b>Psorophora ciliata</b>	Giant mosquito, vicious biter, feeds on larvae of other species.	WN

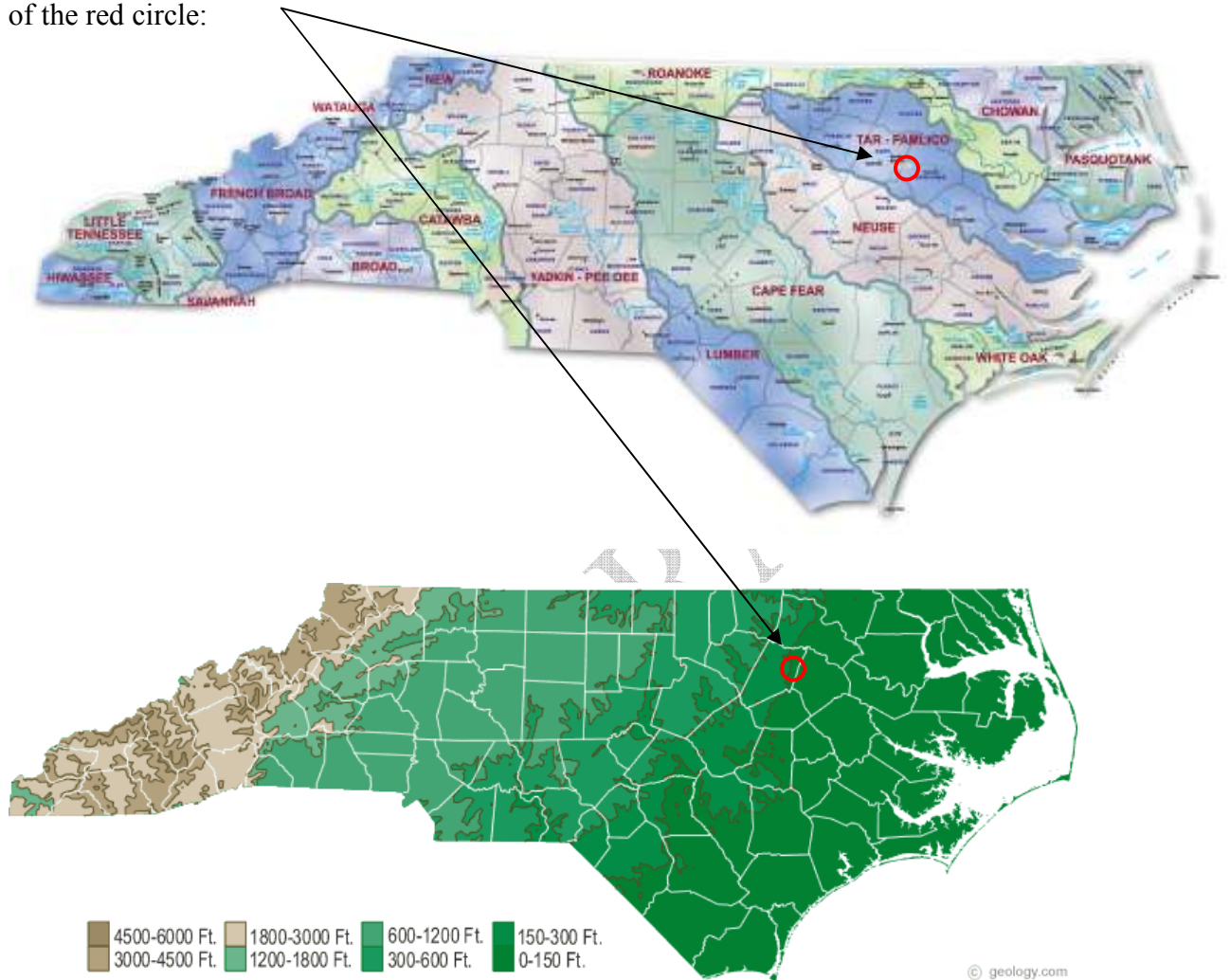


32	<b>Psorophora columbiae</b>	Common, vicious biter, open sunlight and temporary pools species	CV, EEE, JC, TEN, WN
33	<b>Psorophora ferox</b>	Very common, vicious biter, a major pest after hurricanes or rain of 4 or more inches	CV, CE-untyped, WN
34	<b>Psorophora horrida</b>	Uncommon, vicious biter,	
35	<b>Psorophora howardii</b>	Giant mosquito, vicious biter, temporary woodland pools.	
36	<b>Psorophora mathesoni</b>	Uncommon, vicious biter, temporary woodland pools	
37	Toxorhynchites rutilus septentrionalis	Giant mosquito, does not bite. Larva is a predator of other mosquito larvae.	
38	Uranotaenia sapphirina	Tiny, locally common, feeds on frogs and reptiles.	EEE, WN
<p>** - Means virus has been found in that species in the eastern United States, but it may not be a vector of that virus.</p>			
<p>*** - Ae. aegypti has not been found in Rocky Mount or widely across the state since Ae. albopictus became prominent throughout the state (approx 1990-1991 in Rocky Mount).</p>			
<p>**** - This refers to the Mosquito Species which have been confirmed as occurring in NC (as of April 2008) per Dr. Bruce Harrison, Medical Entomologist formerly with NCDENR PHPM. The entire list of mosquitoes found statewide may be found on file in the Community Code Enforcement Office <a href="#">Mosquito Species Confirmed In NC in 2008</a> or on the North Carolina Mosquito &amp; Vector Control Association's website at: <a href="http://ncmvca.org/08MosqSpConfirmedNC.pdf">http://ncmvca.org/08MosqSpConfirmedNC.pdf</a>.</p>			
<p>Abbreviations for three virus diseases: CE-untyped = California encephalitis subgroup; CV = Cache Valley virus; DEN = Dengue virus, EEE = Eastern Equine encephalitis virus; JC = Jamestown Canyon virus; LAX = LaCrosse virus; SLE = St. Louis encephalitis virus; TEN = Tensaw virus; TVT = Trivittatus virus; WN = West Nile virus; and YF = Yellow Fever virus.</p>			

**5.1.2.a (cont):** The City of Rocky Mount is located in the (western) coastal area of the state. It covers a portion of both Nash and Edgecombe counties with the larger area being in Nash County. Located in the Tar-Pamlico River Basin, Rocky Mount has several natural and man-made habitats which are conducive to breeding mosquitoes. The Tar River, Maple Creek, Stony Creek, Winders Creek, flood plains, woodland pools swamps, other creeks, lakes, ponds, streams, retention sites, catch basins, tree holes, ground pools, pastures, cropland and other farmland, ditches, and containers among others provide adequate oviposition sites for the many different mosquito species identified on the list above. The source data was compiled from employee's daily notes and comments as well as spreadsheets and other documentation listing inspection/collection dates and results. Additional data sources used are on-line maps including those from the City's GIS office, and Engineering Division.

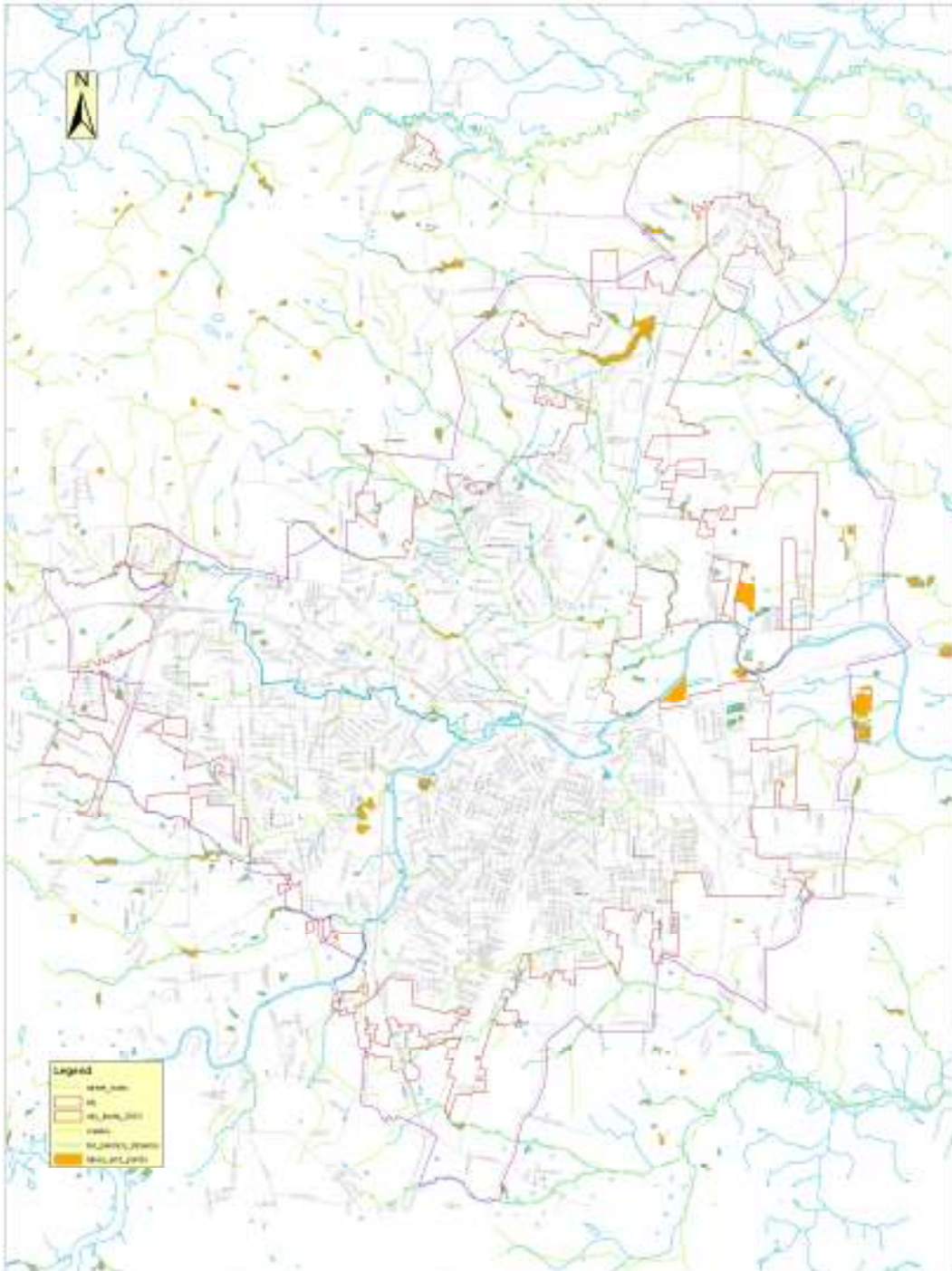
5.1.2.b: General location maps:

General location maps are shown below with Rocky Mount being in the general vicinity of the red circle:



**5.1.2.b: General location maps (continued):**

Another general map below also identifies the City of Rocky Mount's corporate city limits, Tar River (Tar-Pamlico streams), lakes and ponds, and creeks. The pest management area is (generally) the area within the Corporate City limits of Rocky Mount, but it may extend up to 300 foot outside the city limits in some areas due to potential breeding sites and/or harborage areas.



### 5.1.3 Schedules and Procedures:

**You must Document the following schedules and procedures in your PDMP**

**5.1.3.1** Pertaining to control measures used to comply with effluent limitations in part 2. The following must be documented in your PDMP:

#### 5.1.3.1a Spill Prevention.

**Procedures and maintenance activities for preventing spills and leaks of pesticides associated with the application of pesticides covered under this permit.**

Every member of the PDMP Team licensed in Category B (Public Health) will be included as a member of the Spill Response Team. Each truck or vehicle with ULV equipment installed for mosquito fogging has an [Universal Emergency Spill Kit](#) located behind the seat (or in the extended cab area) of the pick up truck. Each mosquito fogging truck has a mission book with the following information:

#### **Spill Management**

- [Annual Spill Response Training Form](#)
- [Checklist for Reporting Incidents](#)
- [Emergency Spill Response Phone Numbers](#)
- [Emergency Telephone Numbers](#)
- [Spill Kit Information](#)
- [Spill Management Procedures](#)
- [Universal Emergency Spill Kit Contents](#)

#### **Adulticide Product Information**

- [Adulticide Worksheet](#)
- Pesticide Label - [Biomist 30+30 Label](#).
- Pesticide MSDS - [Biomist 30+30 ULV MSDS](#)
- Diluent Label - [BVA 13 Label](#)
- Diluent MSDS - [BVA 13 MSDS](#)
- Diluent General Information - [BVA Oil \(General Info\)](#)
- How to Read a MSDS - [Page 1](#), [Page 2](#)
- Fogging Guidelines - [Ground Application General Guidelines Revised 20120416](#)

#### **City of Rocky Mount Community Code Enforcement Division Internal Policies**

- [CALL BEFORE FOGGING LIST](#)
- [CRM EMPLOYEE EMERGENCY CONTACT INFORMATION.pdf](#)
- [DO NOT FOG LIST](#)
- [Emergency Spill Response Phone Numbers](#)
- [Mosquito Fogging Concerns](#)
- [Protecting Honey Bees](#)
- [Rocky Mount Mosquito Fogging Policy.doc](#)

**City of Rocky Mount Accident Reporting Forms**

- [CRM Accident-A Reporting Procedures](#)
- [CRM Accident-B Investigation Procedures](#)
- [CRM Accident-C1 Supervisor's Investigation Report-on-line version](#)
- [CRM Accident-C2 Investigation Report-Print and Fill-out](#)
- [CRM Carolina Quick Care Authorization](#)
- [CRM EMPLOYEE EMERGENCY CONTACT INFORMATION](#)
- [CRM Medical Treatment Providers](#)
- [CRM WC Treatment of Job Injury Form \(Referral\)](#)
- [CRM WC Accident Injury Report \(OSHA Form 19\)](#)
- [CRM Witness Card.](#)

**City of Rocky Mount Adverse Incident Reporting**

- [Adverse Incident Training Form](#)
- [Twenty- Four Hour Adverse Incident Reporting Form](#)
- [Thirty Day Written Adverse Incident Reporting Form](#)
- [Adverse Incident to Threatened or Endangered Species or Critical Habitat](#)

FINAL DRAFT

### **5.1.3.1b Pesticide Application Equipment.**

**Procedures for maintaining the pesticide application equipment in proper operating condition, including calibrating, cleaning, and repairing the equipment.**

#### **Calibration:**

Prior to the first application of an adulticide each year, all mosquito fogging equipment will be calibrated as required by the North Carolina Department of Agriculture (NCDA). Calibration will be conducted by state personnel or product vendors using an acceptable practice or standard of the industry (e.g. using the AIMES DCIII droplet analysis or similar droplet testing method).

#### **Cleaning and Repairing:**

1. Before beginning each night's fogging route, a visual inspection will be conducted of the ULV machine to identify potential leaks and/or spills. Any spills or leaks found must be cleaned up or repaired before the equipment can be used for fogging.
2. Foggers should be cleaned at least once per month when used for mosquito fogging.
3. Periodically during their time of use, the truck(s) and the adulticiding equipment should be visually inspected for cleanliness, leaks and needed repairs. If leaks are found or repairs are needed, that machine will be taken off line immediately and remain off line until the repair is completed. The City of Rocky Mount maintains additional operational adulticiding units which may be used if one is shut down for repairs. The additional units may also be used for post disaster emergency response measures as needed.



### **5.1.3.1c Pest Surveillance. Procedures and methods for conducting pre-application pest surveillance, if necessary**

**Requests for Service:** Each citizen request will be investigated to determine the best IPM strategy. The City of Rocky Mount uses a [CRM Mosquito Control Investigation Form](#), Dispatch Record, or Service Request to make an inspection following each citizen mosquito complaint or fogging request to determine the best IPM strategy. Staff is trained to evaluate each request using the [American Mosquito Control Associations Best Management Practices](#) for mosquito control.

The City of Rocky Mount will use landing counts throughout the City prior to and after significant environmental events to assess the need for control measures. Additionally, individual citizen requests will be investigated to determine the best IPM measure to implement on a case by case basis. The City of Rocky Mount is a municipality which utilizes an IPM approach to manage mosquito populations. Surveillance, landing counts, trapping, complaint investigations, and source reduction is implemented prior to and/or in addition to adulticiding in an effort to be good stewards in regards to our citizens and the environment. Larviciding is also used in areas or situations where access is practical, feasible, and/or cost effective.

The City of Rocky Mount will implement adulticiding activities once mosquito thresholds [Thresholds for mosquito counts 2012](#) have been met. The anthropophagic landing count threshold for the City of Rocky Mount will be set at two (2) anthropophagic mosquitoes per minute using [CRM Landing Count Information](#). *Aedes albopictus* (Asian tiger mosquito) will be counted separately from other anthropophagic mosquitoes during landing counts. In situations where *Aedes albopictus* is encountered, a handheld thermal fogger may be used locally to knock down the initial population, and citizens will be instructed on source reduction and OTC Outdoor or Backyard Foggers for control measures. Once fogging thresholds are met for other anthropophagic mosquitoes, adulticiding operations will continue for the duration of the environmental event that triggered the emergence of that mosquito population. Typically, an adult population of anthropophagic mosquitoes exists for 3 to 4 weeks depending on time of year.

As the adult nuisance populations wane, the risk of arbovirus transmission increases. While anthropophagic mosquito populations may fall below the nuisance threshold it is imperative to continue adulticide operations until the increased risk of arbovirus transmission is reduced to acceptable level based on the best professional judgment of the PDMP team in the City.

**5.1.3.2 Pertaining to other actions necessary to minimize discharges.  
The following must be documented in your PDMP.**

**5.1.3.2a Spill response Procedures-at a minimum you must have:**

The City of Rocky Mount uses the template provided for [Spill Management Procedures](#) published in the North Carolina Department of Agriculture's training Manual, "Applying Pesticides Correctly". Training will be provided annually and will be documented using the [Annual Spill Response Training Form](#). Additionally, the [Checklist for Reporting Incidents](#) and [Emergency Spill Response Phone Numbers](#) will also be reviewed during the training.

Every member of the PDMP Team licensed in Category B (Public Health) will be included as a member of the Spill Response Team.

**Operational Spill Response Considerations**

It should be noted that ULV applications use approximately 2 to 5 ounces of finished spray a minute (depending on the product) during aduaticide applications. In the event there is a breakdown or a leak in one of the pesticide lines. The Operator is able to identify a potential problem within seconds of the equipment failure and turn off the pesticide pump immediately from inside the cab.

The operator will stop the truck and evaluate the severity of the leak onsite and deploy the [Universal Emergency Spill Kit Contents](#) located behind the seats or in the extended cab area of the pickup truck. Typically any pesticide that leaks will do so into the bed of the truck and the spill can be corralled there.

Additionally, ground based aduaticiding equipment operates on streets and roads well away from the waters of North Carolina. One of the biggest threats to the waters of North Carolina resulting from ground based ULV operations is the potential for an accident with another motor vehicle. In the event this occurs operators will initiate the city accident reporting protocols ([CRM Accident-A Reporting Procedures](#), [Spill Management Procedures](#), [Checklist for Reporting Incidents](#), and/or [Emergency Telephone Numbers](#)) and inform the necessary first responders.



### 5.1.3.2b Adverse Incident Response/Reporting Procedures

#### **Adverse Incident (Definition)**

An Adverse Incident means an incident that you have observed upon inspection or of which you otherwise become aware, in which:

1. There is evidence that a person or non-target organism has been exposed to a pesticide residue, and
2. The person or non-target organism suffered a toxic or adverse effect.

The phrase “toxic or adverse effects” includes effects that occur within the waters of the state on non-target, plants, fish or wildlife that are unusual or unexpected (e.g., effects are to organisms not otherwise described on the product label or otherwise not expected to be present) as a result of exposure to a pesticide residue, and may include:

- Distressed or dead juvenile and small fishes
- Washed up or floating fish
- Fish swimming abnormally or erratically
- Fish lying lethargically at water surface or in shallow water
- Fish that are listless or nonresponsive to disturbance
- Stunting, wilting, or desiccation of non-target submerged or emergent aquatic plants
- Other dead or visibly distressed non-target aquatic organisms (amphibians, turtles, invertebrates etc.)

The phrase “toxic or adverse effects” also includes any adverse effects to humans (e.g. skin rashes) or domesticated animals that occur either directly or indirectly from a discharge to the waters of the U.S. that are temporally and spatially related to a pesticide residue (e.g. vomiting, lethargy).

The internal and external procedures the City of Rocky Mount uses for notification of an adverse incident will be available in each pesticide vehicle's mission book. Contact information for state/federal permitting agency, nearest emergency medical facility, and nearest hazardous chemical responder is included at the top of each reporting form. The adverse incident reporting forms include:

- [Twenty- Four Hour Adverse Incident Reporting Form](#)
- [Thirty Day Written Adverse Incident Reporting Form](#)
- [Adverse Incident to Threatened or Endangered Species or Critical Habitat](#)

### 5.1.3.2c Pesticide monitoring Procedures

**Procedures for monitoring consistent with the requirements in part 4 including:**

**1. The Person (or position) responsible for the conducting monitoring.**

Each City of Rocky Mount Community Code Enforcement Division employee licensed in category B (Public Health) is authorized to conduct post application landing counts for efficacy as well as Adverse Event identification, after aduictiding operations as time and conditions allow.

**2. Procedures for documenting any observed impacts to non-target organisms resulting from your pesticide discharge.**

**3. Visual assessments of the aduictide treatment area will be preformed:**

- a. During any post application surveillance or efficacy check that you conduct, if a surveillance or an efficacy check is conducted.
- b. During any pesticide application, when considerations for safety and feasibility allow.

In the event an employee observes a potential adverse event to the waters of North Carolina resulting from an aduictide operation during post aduictiding landing count inspections; the employee will put the Word “Yes” in the column called “Adverse Incident Yes/NO” column in the [Aduictide Worksheet](#). When a potential adverse incident is recorded, the Community Code Enforcement Supervisor (or his/her designee) will investigate and initiate any required documentation and/or notifications.

All personnel licensed in category B will be trained in identifying and reporting adverse incidents annually. Training will be documented on The [Adverse Incident Training Form](#).

#### 4.0 Site Monitoring

**4.1 Monitoring Requirements for Pesticide Applicators.** The City of Rocky Mount monitors the amount of pesticide applied to ensure that we are using the lowest amount to effectively control the pest, consistent with reducing the potential for the development of pest resistance. Periodically post treatment landing count assessments are conducted to ensure the aduictiding products are effective at the calibrated rate of application.

The City of Rocky Mount monitors pesticide application activities to ensure we are performing regular maintenance activities and to ensure that our application equipment is in proper operating condition to reduce the potential for leaks, spills, or other unintended discharge of pesticides to waters of the U.S.

### **5.1.5 Signature Requirements:**

You must sign, date and certify your PDMP in accordance with Appendix B, Subsection b 11.

(B 11) A -All applications including NOI's must be signed as follows:

For a municipality, state, federal, or other public agency: By either a principal executive officer or a ranking elected official. For Purposes of this subsection, a principal executive officer of a federal agency includes (i) the chief executive officer of the agency, or (ii) a senior executive officer having responsibility for the overall operations of a principal geographic unit or the agency,

### **5.2 Pesticide Discharge Plan Modifications.**

The City of Rocky Mount will modify the PDMP whenever necessary to address any of the triggering conditions for corrective action or when a change in pest control activities significantly changes the type or quantity of pollutants discharged. Changes to the PDMP will be made before the next pesticide application that results in a discharge, as practical, or if not, as soon as possible thereafter. The revised PDMP must be signed and dated in accordance with Appendix B, Subsection B 11.

The City of Rocky Mount will review the PDMP annually **between January and March** and/or as necessary to update the pest problem identified and pest management strategies evaluated for the pest management area in the City of Rocky Mount. Plan review and modifications will be annotated on the [PDMP Plan Review/Modification Form](#).

### **5.3 Pesticide Discharge Management Plan Availability.**

You must retain a copy of the current PDMP, along with all supporting maps and documents, at the address provided on the NOI. The PDMP and all supporting documents must be readily available, upon request, and copies of any of these documents provided, upon request to the Division; a State, Territorial, Tribal, or local agency governing discharges or pesticide applications within their respective jurisdictions; and representatives of the U.S. Fish and Wildlife Services (USFWS) or the National Marine Fisheries Service (NMFS). The Division may provide copies of your PDMP or other information related to this permit that is in its possession to members of the public. Any Confidential Business Information (CBI) as defined in 40CFR Part 2, may be withheld from the public provided that a claim of confidentiality is properly asserted and documented in accordance with 40CFR Part 2; however, CBI must be submitted to the division, if requested, and may not be withheld from those staff within the Division FWS an NMFS cleared for CBI review.

By statute G.S. 132-1 the City of Rocky Mount must protect confidential information. "No request to inspect, examine, or obtain copies of public records shall be denied on the

grounds that confidential information is comingled with the requested non-confidential information. If it is necessary to separate confidential from non-confidential information in order to permit the inspection, examination, or copying of the public records, the public agency shall bear the cost of such separation”.

FINAL DRAFT

## **Recordkeeping and reporting**

The City of Rocky Mount Community Code Enforcement Division will keep written records as required by this permit. These records shall be accurate and complete and sufficient to demonstrate compliance with the conditions of this permit. The City of Rocky Mount will rely on pesticide application records and documents developed for other obligations such as requirements under FIFRA, and State pesticide programs, provided all requirements of this permit are satisfied.

### **7.1 All applicators must keep the following records:**

- a. A copy of this permit (an electronic copy is acceptable).
- b. A copy of any Adverse Incident Reports (See Part 6.4.2).
- c. Your rationale for any determination that reporting of an identified adverse incident is not required consistent with allowances identified in Part 6.4.1.
- d. A copy of any Corrective action Documentation (see Part 6.6).

FINAL DRAFT

**5.1.5 Signature Requirements. You must sign, date and certify your PDMP in accordance with Appendix B, Subsection B.11.**

For a municipality, state, federal, or other public agency: By either a principal executive officer or ranking elected official. For purposes of this subsection, a principal executive officer of a federal agency includes (i) the chief executive officer of the agency, or (ii) a senior executive officer having responsibility for the overall operations of a principal geographic unit or the agency (e.g., Regional Administrator of EPA).

FINAL DRAFT

**REQUESTING AUTHORITY FROM COUNTY BOARD OF COMMISSIONERS**

\_\_\_\_\_  
Edgecombe County Board of Commissioners  
*Name of County Board*

By: \_\_\_\_\_  
*Signature of Authorized Official*

\_\_\_\_\_  
Jonathan Boone  
*Typed or Printed Name of Authorized Official*

\_\_\_\_\_  
Public Works Director  
*Typed or Printed Official Title of Above*

Date: \_\_\_\_\_

\_\_\_\_\_  
Robert F. Collins  
*Name of Licensed Applicator (Please Print)*

\_\_\_\_\_  
032-1877  
North Carolina License Number

**REQUESTING AUTHORITY FROM COUNTY BOARD OF COMMISSIONERS**

\_\_\_\_\_  
Nash County Board of Commissioners  
*Name of County Board*

By: \_\_\_\_\_  
*Signature of Authorized Official*

\_\_\_\_\_  
Jonathan Boone  
*Typed or Printed Name of Authorized Official*

\_\_\_\_\_  
Public Works Director  
*Typed or Printed Official Title of Above*

Date: \_\_\_\_\_

\_\_\_\_\_  
Robert F. Collins  
*Name of Licensed Applicator (Please Print)*

\_\_\_\_\_  
032-1877  
North Carolina License Number



**RESOLUTION TO BE ADOPTED BY THE ROCKY MOUNT CITY  
COUNCIL DESIGNATING OFFICIAL TO SIGN PAPERS AND TO  
OTHERWISE REPRESENT THE BOARD IN CONNECTIONS WITH  
MOSQUITO CONTROL ACTIVITIES NATIONAL POLLUTION  
DISCHARGE ELIMINATION SYSTEM  
GENERAL PERMIT NCG560000**

Upon motion of \_\_\_\_\_,  
(Name)

Seconded by \_\_\_\_\_,  
(Name)

It is here by ordered that \_\_\_\_\_,  
(Name)

as agent for \_\_\_\_\_,  
(Governmental Unit)

is hereby authorized and empowered to sign and execute all papers and documents necessary in connection with the request made to the Division of Water Quality, North Carolina Department of Environment and Natural Resources Division of Water Quality, General Permit NCG560000. (S) He is further authorized and required to carry out all agreements stipulated in the permit application submitted by us to the Division of Water Quality, North Carolina Department of Environment and Natural Resources, and to perform other acts that are proper and necessary in connection with the operation of this permit. Acts of said person on behalf of said

\_\_\_\_\_, are in all respects validated, approved and  
(Governmental Unit)

confirmed. The undersigned \_\_\_\_\_,  
(Name)

clerk of the \_\_\_\_\_, hereby certifies that the  
(Governing Unit)

foregoing is a true copy of the resolution of the \_\_\_\_\_  
(Governing Unit)

at a meeting held on the \_\_\_\_\_ day of \_\_\_\_\_, 2012.

\_\_\_\_\_  
Clerk